

# WallControl 10 Software

Advanced video wall control  
technology



## ADVANCED VIDEO WALL CONTROL

Video wall deployments require a number of users to interact simultaneously with a large number of inputs across a multiple screens to get the data where they require.

WallControl 10 provides users with the interface required to quickly and effectively manage content that include video captures, IP streams and local applications. Users are able to place any input source on any part of the Video Wall using a simple drag and drop operation. Precise positioning of each piece of content can be achieved through the mouse and keyboard, or via the revolutionary template tool.

The Template Tool allows users to not only place their own templates across an entire wall which evenly distributes content but WallControl 10 also allows users to apply a template to an individual window so multiple windows can be grouped together and moved as a single item.

WallControl 10 also allows you to save and recall layout files quickly and easily ensuring the video wall is always showing the correct information.

## SIMPLE INTERFACE - ADVANCED FEATURES

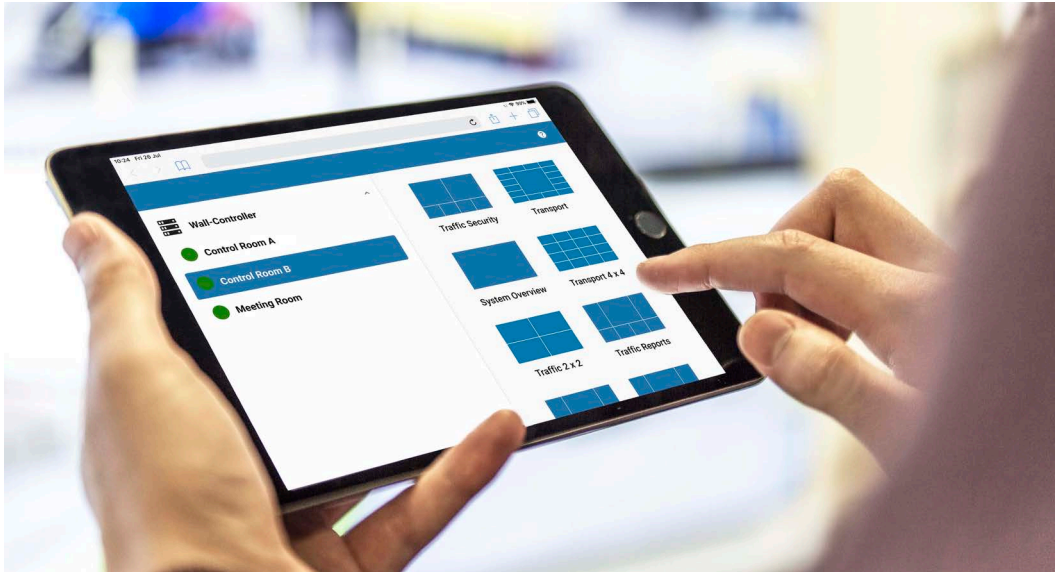
WallControl 10 will allow any piece of content, whether from a Datapath capture card, IP via the PC processor or an ActiveSQX card or local media to be placed in anywhere on a video wall. WallControl 10 also allows administrators to deploy multiple unique videos walls from a single Datapath VSN system.

Using User Rights Management administrators can determine which users on their network can firstly access each wall and secondly determine what level of permission each user will have. Restrictions can include the number of sources and layout files available to each user, which templates they can deploy and whether the desktop capture is available or not.

Engineering the **world's best** visual solutions

**DATAPATH**  
EXCELLENCE BY DESIGN

# Advanced video wall control



*Layouts can be accessed via the web interface*

## WEB INTERFACE

The web interface allows users to connect to the video wall from any compatible browser. As long as the browser and the Datapath wall controller are on the same network, users are able to connect through a browser on their laptops, phones or tablets. Users can select which wall they wish to change and then will be presented with the available layouts. They can use the 'Snapshot' feature to receive an image of what is being displayed on the wall.

The Web Interface is compatible with Chrome and Safari browsers. Systems administrators can also choose which walls can be accessed via the Web Interface, giving the ability to disable web access on sensitive walls.

## KVM

Keyboard and Mouse (KVM) functionality gives WallControl 10 operators the ability to manipulate sources from their workstations. In Command and Control environments, sources being captured may derive from unmanned workstations processing data for display onto a wall. With WallControl 10 software, operators can use their local keyboard and mouse to manipulate the remote machine. This allows high quality capture to be placed on a video wall, whilst the KVM is performed locally via an IP based Datapath Agent window.

## ADVANCED WEB PAGE CONTROL

Advanced web page control gives operators the ability to view and manipulate web pages. The advanced functionality includes the auto-refresh of web pages allowing for up-to-the-minute monitoring, vertical and horizontal scroll ability to position the web page view, and a zoom function to focus only on the most important sections of a web page.

## MULTIWALL

WallControl 10 allows multiple walls to be delivered by a single VSN system. Walls in separate areas of a building can be independently driven from a single location.

Multiple walls can be easily set up using the wall creator wizard and if required each wall can be assigned a unique set of sources or video resources.

# Advanced video wall control

## USER RIGHTS MANAGEMENT

User rights management can be deployed on each VSN system. Users can be assigned roles on a per wall basis based on their Windows log in, with each role allowing access to a subset of sources or layout files. A user may have unrestricted access on Wall 1 but be confined to pre-determined layouts on Wall 2.

## TEMPLATES

WallControl 10 allows users to create templates that subdivide the video wall. Users can drop content into each area and the content will automatically fill the template space. Users can also use templates on active Windows to create groups of content that can all be moved, resized and managed together.

## CROPPING

WallControl 10 includes the ability to crop both SQX and Vision sources. With a user-friendly interface, cropping is done by selecting the area of interest from a snapshot of the source. Save the crop to make it available for instant deployment to the video wall, and as part of a layout file.

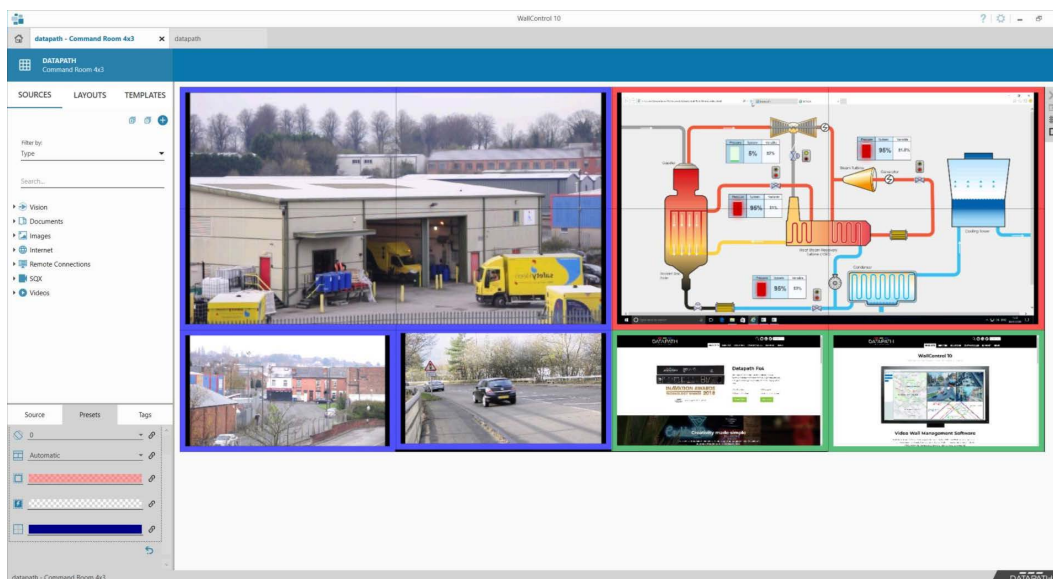
## ON-SCREEN DISPLAY (OSD)

The On-Screen Display feature allows users to place text over Vision and SQX windows. This allows operators to name windows so viewers can quickly identify what they are seeing on the video wall. The OSD also allows users to add variables to the window such as Time and Date, Frame Rate & Source resolution as well as being to set the text size, colour and font. OSD is available on Windows 7 and Windows 10 using the Datapath WDDM driver.

## BORDERS AND FRAMES

The Borders and Frames feature allow users to add a colour surround to the images on the video wall. Adding a border will surround the content with a chosen colour irrespective of the aspect ratio, whilst adding a frame will add a colour around the window on the video wall. Borders and Frames can be used to signify the importance of a piece of content, to quickly identify the source type or to categorise sources that may look similar but are monitoring different subsystems.

Borders are available on Vision and SQX windows, frames are available on all windows. Borders and Frames can also be controlled via the Command Line Interface.

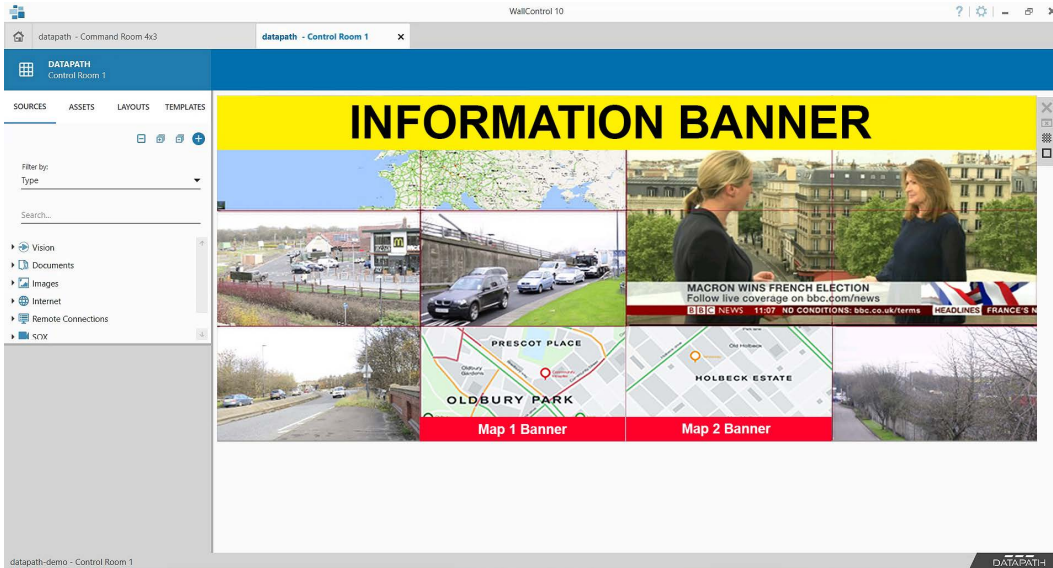


*Use borders and frames to surround content with a chosen colour to group source types or prioritize content.*

# Advanced video wall control

## BANNERS

Create banners for display on the video wall. Users specify the banner text (either by entering manually or by specifying an RSS feed to automatically parse), text scrolling direction (or setting as static) and the background colour for the banner. Transparent backgrounds are also supported.



Create banners with text or RSS feed content to scroll across the video wall.

## ASSET MANAGEMENT

Once created, banners can be saved in the new Asset Manager included as part of WallControl 10 Pro, for re-use in different layouts across multiple video walls. Configured windows (with crops, OSD, borders and carousels) can also be saved as an Asset for quick recall as needed.

## SQX DECODING

Playing many locally stored media files can be difficult due to processor limitations. However, WallControl 10 has the ability to decode media files by using ActiveSQX cards. By assigning media to "Decode via SQX" Datapath and WallControl 10 offer more scale allowing lots of media files to be decoded by SQX cards at once. Each ActiveSQX card is capable of decoding 6 Full HD videos or 3 4K 30 videos or a single 4K 60 video that uses H264 compression, to get more media onto the wall simply add another ActiveSQX card into the system.

## SOURCE STREAMING

WallControl 10 Pro users can now stream captured Vision sources over the local network to a Datapath ActiveSQX card or any standard RTSP decoding software (such as VLC) for remote monitoring, processing or recording.

## ANY SOURCE ANYWHERE

WallControl 10 allows users to position any piece of content anywhere on the video wall. The content can cross multiple screens, or multiple pieces may be seen in a single screen. WallControl 10 allows content to be received from Datapath capture cards, IP streams, VNC sources, local videos and image files as well as allowing browser windows to be opened and positioned on the wall.

# Advanced video wall control

## IP DECODE

WallControl 10 will allow users to effectively decode IP streams using either the onboard processor or dedicated Datapath ActiveSOX decode card(s).

## COMPATIBILITY

Windows 7\*, Windows 10, Windows Server 2019.

## AVAILABLE LANGUAGES

WallControl 10 software is available in Chinese, English, French, Japanese, Portuguese & Spanish.

## SPECIFICATION

### DECODE SUPPORT

H.264 Mpeg4 (Part 10 AVC), Mpeg4 Part 2 & MJPEG

### INTERNET PROTOCOL

IPv4, IPv6

### DE-INTERLACING

Supported

### STREAMING PROTOCOLS

HTTP, RTSP, & MPEG2-TS support Multicast & Unicast

## MODELS AVAILABLE

Order Code: WALLCON10STD

Fully featured WallControl software with the ability to decode up to 8 IP streams\*\*.

Order Code: WALLCON10PRO

As above PLUS MultiWall capability, User Rights Management and the ability to decode as many IP streams as the available hardware will allow.

## DOWNLOAD

Download WallControl 10 from the Datapath website at [www.datapath.co.uk](http://www.datapath.co.uk).

\* WallControl 10 features from version 1.10 and above may not be supported on Windows 7

\*\* The amount of processing power available in a system and therefore the number of simultaneous streams that can be decoded are dependent on a number of factors including any additional applications running on the system. These figures assume an Intel Corei7 system with no other active applications running.

**Datapath UK and Corporate Headquarters**  
Bemrose House, Bemrose Park,  
Waygoose Drive, Derby,  
DE21 6XQ, United Kingdom

☎ +44 (0) 1332 294 441  
✉ [sales-uk@datapath.co.uk](mailto:sales-uk@datapath.co.uk)

[www.datapath.co.uk](http://www.datapath.co.uk)

**Datapath North America**  
2490 General Armistead Avenue,  
Suite 102, Norristown,  
PA 19403,  
USA

☎ +1 484 679 1553  
✉ [sales-us@datapath.co.uk](mailto:sales-us@datapath.co.uk)

**DATA PATH**  
EXCELLENCE BY DESIGN